



# GAT MONTHLY MEMBERSHIP PROGRESS REPORT

Results as of: 3/31/2022

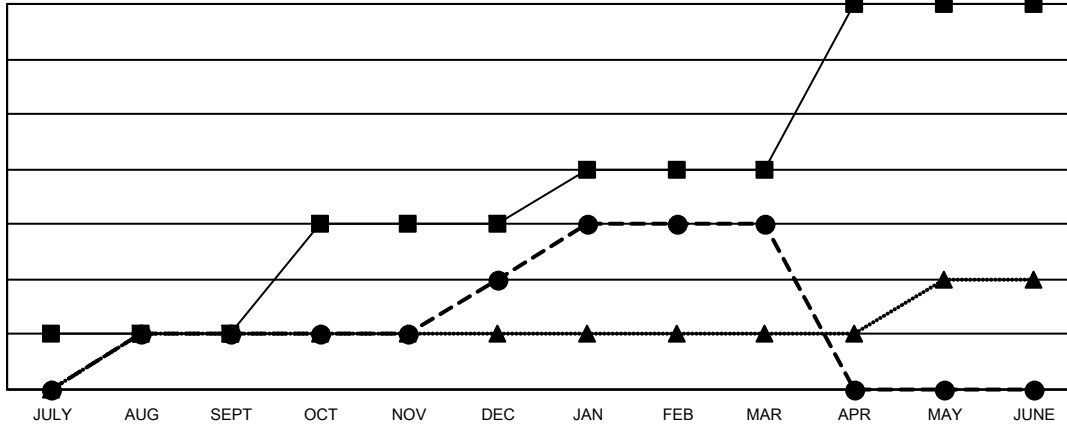
Multiple District 12

LOCATION: TENNESSEE

Clubs			
RESULTS FOR 2021-2022			
QUARTER	NEW CLUB GOAL	NEW CLUBS	DROPPED CLUBS
JULY/AUG/SEPT	1	1	1
OCT/NOV/DEC	2	1	2
JAN/FEB/MAR	1	1	0
APR/MAY/JUNE	3	0	0

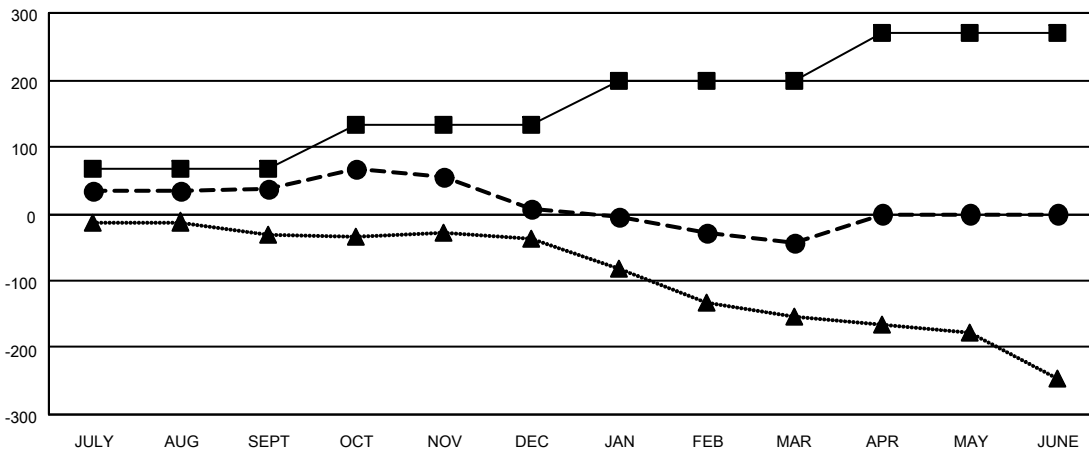
Members			
RESULTS FOR 2021-2022			
QUARTER	MEMBER GROWTH NET GOAL	MEMBER GROWTH ACTUAL	DROPPED MEMBERS ACTUAL (including transfers)
JULY/AUG/SEPT	66	183	136
OCT/NOV/DEC	66	161	181
JAN/FEB/MAR	67	103	142
APR/MAY/JUNE	71	0	0

GOALS AND ACTUAL NEW CLUBS CUMULATIVE



- CURRENT YEAR GOALS FOR NEW CLUBS
- CURRENT YEAR ACTUAL NEW CLUBS
- ▲- LAST YEAR ACTUAL NEW CLUBS

GOALS AND ACTUAL MEMBERS CUMULATIVE



- MEMBER GROWTH NET GOAL
- MEMBER GROWTH ACTUAL
- ▲- LAST YEAR MEMBERSHIP ACTUAL

<b>DROPPED CLUBS: 3</b>	96 CLUBS OF 199 ADDED 1 OR MORE NEW MEMBERS	<b>GENDER DISTRIBUTION</b>
<b>DROPPED MEMBERS</b>	<a href="#">CLICK HERE FOR CUMULATIVE MEMBERSHIP DATA</a>	MALE 2,545 (60.99%)
DECEASED 58		FEMALE 1,628 (39.01%)
CLUB CANCELLED 37		NON BINARY 0 (0.00%)
OTHER 364		PREFER NOT TO ANSWER 0 (0.00%)
<b>TOTAL 459</b>		<b>TOTAL FAMILY UNIT MEMBERS 963</b>
		FAMILY MEMBERS PAYING HALF DUES 494